

# Commercial Hydraulics

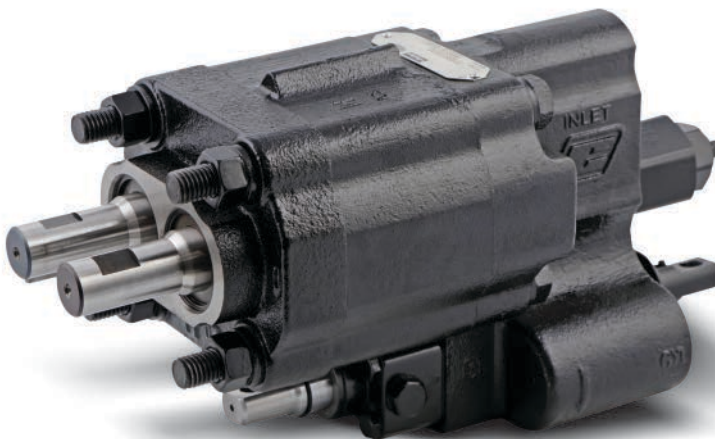
## C101/C102 Dump Pumps



### C101/C102 Series:

Parker's C102 fixed displacement gear pumps offer high performance and high endurance due to its cast iron construction, making it an ideal selection for the Vocational & Municipal Equipment market. It is available as a standard pump with integrated valve for raising and lowering dump beds, with integral relief valve.

- Dump Trucks
- Dump Trailers



### Contact Information:

Parker Hannifin Corporation  
**Pump & Motor Division**  
101 Canterbury Road  
Kings Mountain, NC 28086

phone 888 700 7531  
GPDCustomerService@parker.com

[www.parker.com/pmd](http://www.parker.com/pmd)

### Product Features:

- Three-piece cast iron construction for distribution flexibility
- Durable high-strength cast iron body for excellent power to weight ratio
- Cast Iron construction for durability
- Balanced Thrust Plates minimize friction and leakage
- Roller bearings for durability



ENGINEERING YOUR SUCCESS.

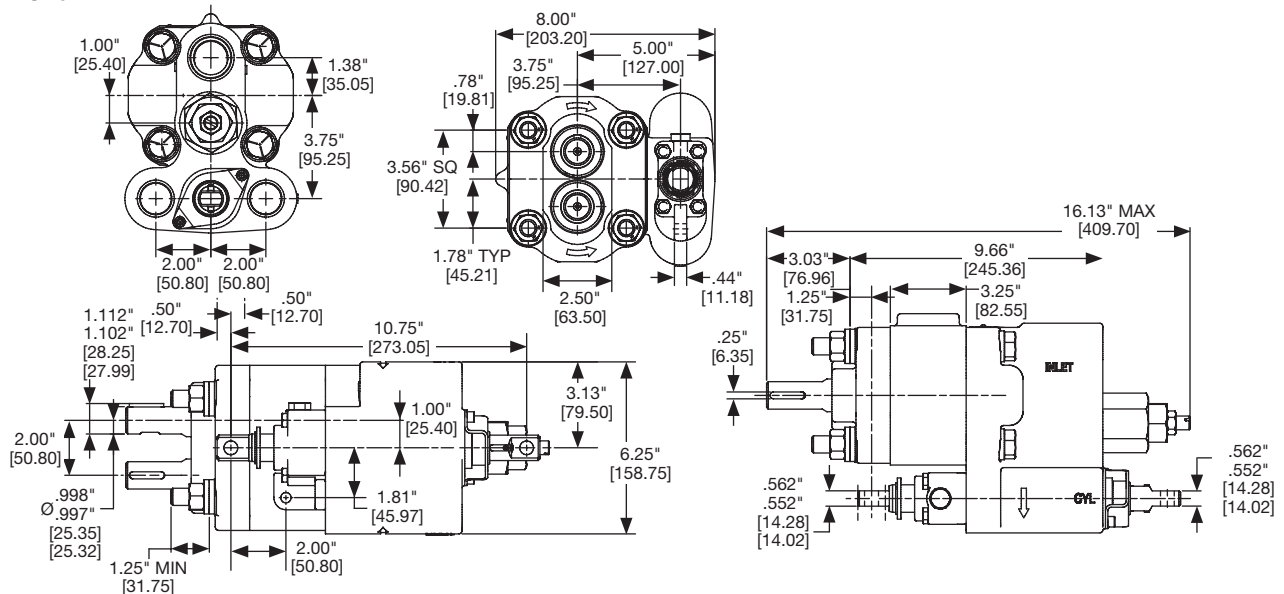
# C101/C102 Series Technical Specifications

Features	Description
Fluid Type	Standard Hydraulic Fluid/ Phosphate Ester
Configuration	Single
Displacement (in <sup>3</sup> /rev)	6.4
Speed range (rpm)	up to 2400
Operating Pressures	up to 172 bar (2,500 psi)
Port Connection	NPT
Port Connection Type	Tapered Thread

Features	Description
Porting Location	Rear Ports
Pump Type	Fixed
Rotation	CW/CCW/Bi-Rotational
Mounting Option	SAE
Shaft Type	SAE
Viscosity	up to 7500
Weight (lbs)	70

## C101/C102 Series Dimensions

### C101



### C102 (CCW Rotation Shown)

